

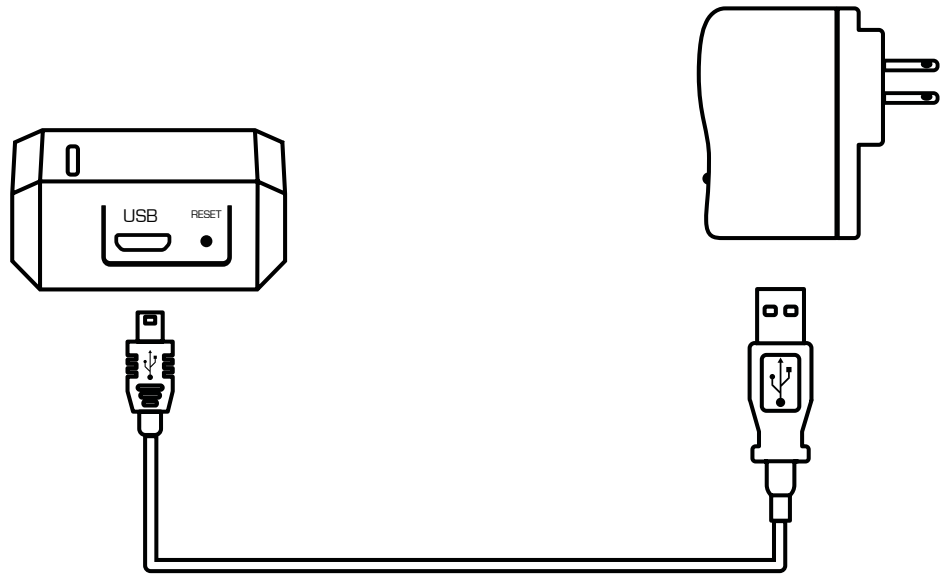
netTALK®)) DUO WiFi



NETTALK DUO WIFI SETUP GUIDE - Ad-Hoc Mode

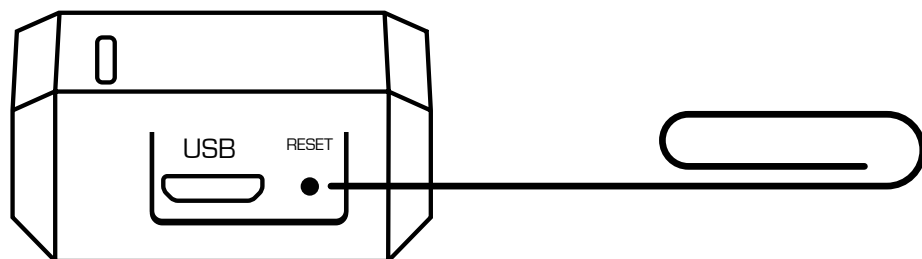
Step 1. Power up the DUO Wi-Fi

- a. Use the supplied USB cable and power adapter.



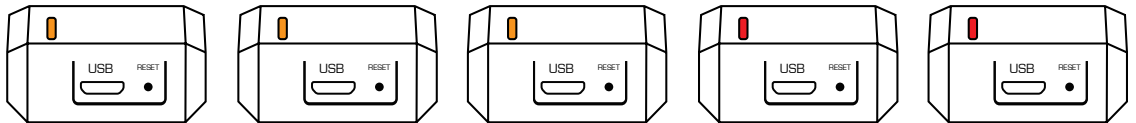
Step 2. Press the reset button 5 times

- a. To press this button, which is located next to the USB/power socket, you need a paper clip, or similar sharp object.



Step 3. Look for the blinking lights

- a. After a few seconds, the light on the DUO WiFi should begin blinking with three quick orange blinks, then two long red blinks, then repeating that pattern.



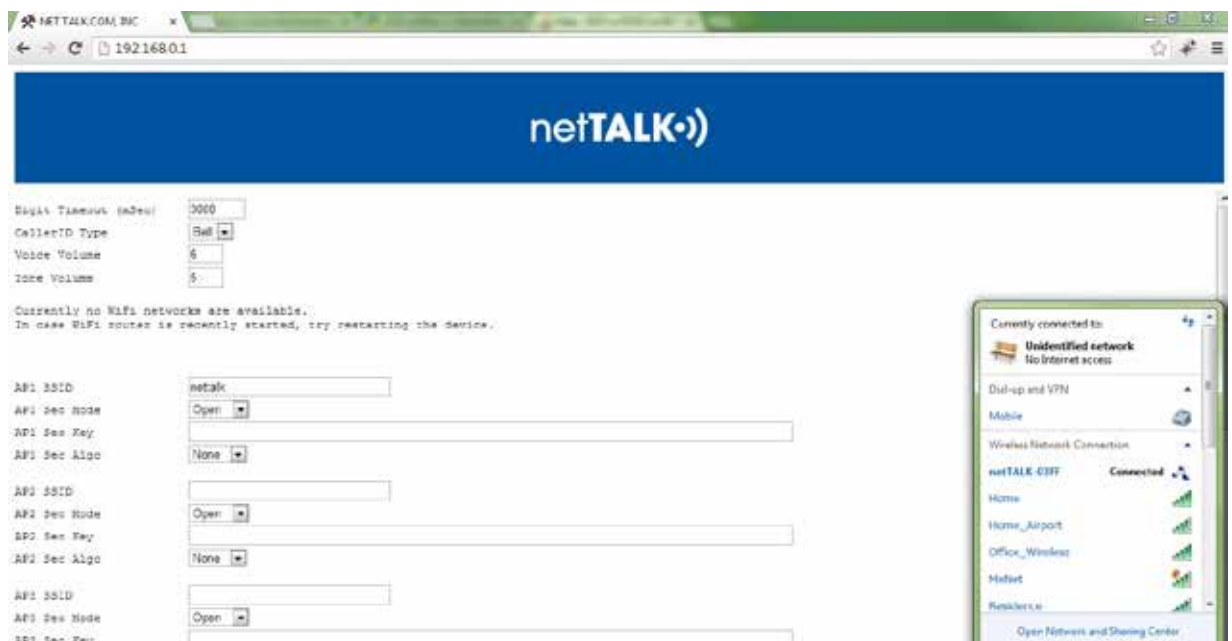
Step 4: Connect to wireless network

- a. On your computer, look at the list of available wireless networks. One should start with the word netTALK- followed by four letters and numbers.
 1. **Example: netTALK-04ac**
- b. Connect to the new wireless network described above.
- c. When asked for the password, type this exactly.
 1. **71794a2139** (Make sure the letter a is a lower case)



Step 5. Open your web browser

- a. Open your web browser (Internet Explorer, Firefox, Chrome, etc) on your computer to access your DUO Wi-Fi's web page.
- b. Enter the following numbers and dots in your Browser Address bar
 1. **192.168.0.1**
 2. Press Enter
 3. The DUO Wi-Fi's web page should be displayed in your web browser.



Step 6. Enter your wireless router security settings

- a. Now you can enter your wireless router security settings to work with your DUO WiFi.

Step 7. Now view your DUO Wi-Fi's web page even if you don't have an Ethernet cable connected to the device.

